



We design, develop, manufacture and produce

- CNC machined parts (Custom and Production)
- Plastic Injection Moulds Standard Components
- Innovative Industrial Products
- Jigs & Fixtures (Checking, Assembly, Testing, Pneumatic, Hydraulic)

COMPANY INFO – 2022.10

About HPML



OUR STORY



OUR MISSION, VISION,
VALUES AND GOALS



OBJECTIVES & 2022
TARGETS



CAPABILITIES AND
SERVICES



PRODUCT
REFERENCES

Our Story



Arvind

Chugh

President & CEO

arvind@hpml.ca

- We started our journey on 14 June 2018 with our first VMC – HAAS VF4.
- Since then, we have continually grown in the field of manufacturing of high tolerance and high quality cnc machined parts & plastic injection molds.
- Our specialized equipment and in- house technical expertise allows us to machine and build products from a wide range of materials, including stainless steels, aluminums, Carbon steel, Alloy steel, Tool steel and Titanium
- We are currently located at Unit B, 105 Northland Road, Waterloo, ON. The workshop area is 3000 Sq. Ft, and we offer 2 shifts – 8 hours each – 6 days a week

Mission

- To exceed our customer's expectations in quality, delivery and cost through continuous improvement and customer interaction
- To maintain a superior level of integrity in interactions with business partners



Vision

To become a World's leading manufacturer and supplier of precision CNC machined parts to major industries such as automotive, medical, office equipment, defense and aerospace etc



Values

- ✓ Act with honesty and integrity
- ✓ Treat people with respect
- ✓ Conduct all business lawfully
- ✓ Accept individual and corporate responsibility
- ✓ Strive for customer satisfaction
- ✓ Improve and innovate continuously
- ✓ Never be wasteful





Objectives

- ✓ Improve quality
- ✓ Improve flexibility
- ✓ Improve sustainability
- ✓ Focus on controlling costs in both production and operations
- ✓ Reduce time-lost accidents
- ✓ Provide excellent customer service



2022 TARGETS

- ✓ Purchase AWEA AF1000 CNC Mill – 4 axis (4th Quarter)
- ✓ Purchase CMM (4th Quarter) and establish Quality Inspection Room for production parts

Our Capabilities



CNC MACHINES



CAD / CAM SOFTWARE



INSPECTION (QC)

CNC MACHINES CAPABILITY

M/C Type	Make	Model-Year	Travel (X, Y,X Inch)	Description	QTY	Capability
CNC VMC	HAAS	VF2 - 2019	Travel: 30*16*20"	10000-rpm Spindle, 20-station carousel tool changer	1	4 Axis
CNC VMC	AWEA	AF1250 (2021)	Travel: 49.2 "x 25.6" x 24.4"	Spindle speed 15000 RPM, CT40 36 Tool, Coolant Thru Spindle, Air Thru Spindle, High Speed Machining	1	4 Axis
CNC VMC	AWEA	AF1600 (2021)	Travel: 63"x 31.5" x 31.5"	Spindle speed 15000 RPM, CT40 36 Tool Coolant Thru Spindle, Air Thru Spindle High speed machining	1	4 Axis
CNC Lathe	GoodWay	GLS-2000LY CNC LATHE	Max Swing Diameter - 22" Swing over saddle - 9" Max turning diameter - 15.35" Max turning length - 23.6" Standard turning diameter - 6.6" Bar capacity - 2.5" Spindle RPM - 4500 Hole through spindle - 3"	8" 3-Jaw Big-bore Power chuck, 12 station 12 Live Servo Indexing Turret (ER-25). Tailstock with Programmable Non-Rotating Quill (MT#4). Part Catcher, Bar feeder Interface, Renishaw HPML Tool setter	1	

CAD/CAM SOFTWARE CAPABILITY

CAD - AutoCAD Fusion 360	2022	3 license
CAD - 2D DraftSight	2022	2 license
Mastercam Mill 3D 2022	1 license	1 license
Mastercam Lathe 2022	1 license	1 license

QC CAPABILITY

Description	Instrument	Measuring range	Accuracy	Qty.
Digital Vernier caliper	Mitutoyo	8"	.0005"	8 set
Digital Vernier caliper	Mitutoyo	24"	.0005"	1 set
Outside Micrometer	Mitutoyo	0-6"	.0001"	4 set
Height Gauge	Mitutoyo	0-40"	.0001"	1 set
Test Indicator	Mitutoyo		.0005"	1 set
Dial Indicator	STM	1"	.001"	3 set
Depth Gauge	Mitutoyo	0-6"	.001"	1 set
Gauge Block set	STM	.05-4"		2 set
Thread Measuring		4-84 TPI		3 set

Raw Materials Machining Capability

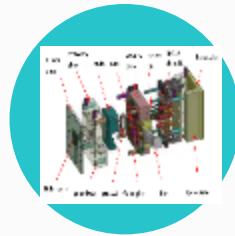
Aluminium	Plastics	Carbon Steel	Alloy Steel	Tool Steel	Stainless Steel	Others	Others
6061-T6	Acetal Black Acetal Natural	1018 CRS	4140 ANN	O1	304	Bearing Bronze C93200	Brass
7075-T5	Nylon 66	1020 CRS	4140 HT	A2	316	Aluminum Bronze C95400	Copper
6063-T5	PVC Grey	1045 HRS	4340 HT	D2	303	Angles	Bronze
3003	PEEK	S50C	8620	P20	440C	Channels	
Cast tooling plate	Blue cast Nylon	CR 12L14		S7	17-4	Tubing	
5052	UHMW	DOM Tubes		S5	18-8	Pipe	
2024	ABS Black	Welded Structures		H13	416	Threaded Rod	

Our Services



CNC MACHINING
(CUSTOM AND PRODUCTION)

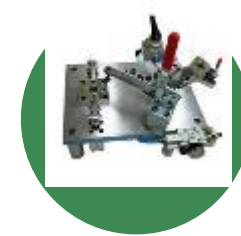
CNC MILLING – 4 AXIS
CNC LATHE – Y AXIS, LIVE TOOLING
LASER CUTTING
LASER ETCHING
CNC WIRE CUT
CNC EDM
SURFACE GRINDING



PLASTIC INJECTION MOULDS & COMPONENTS



INNOVATIVE INDUSTRIAL PRODUCTS



JIGS & FIXTURES
(CHECKING, ASSEMBLY, TESTING, PNEUMATIC, HYDRAULIC)

PRODUCT REFERENCES



ACETAL NATURAL & BLACK



HY Precision Manufacturing

QUALITY PRECISION ACCURACY



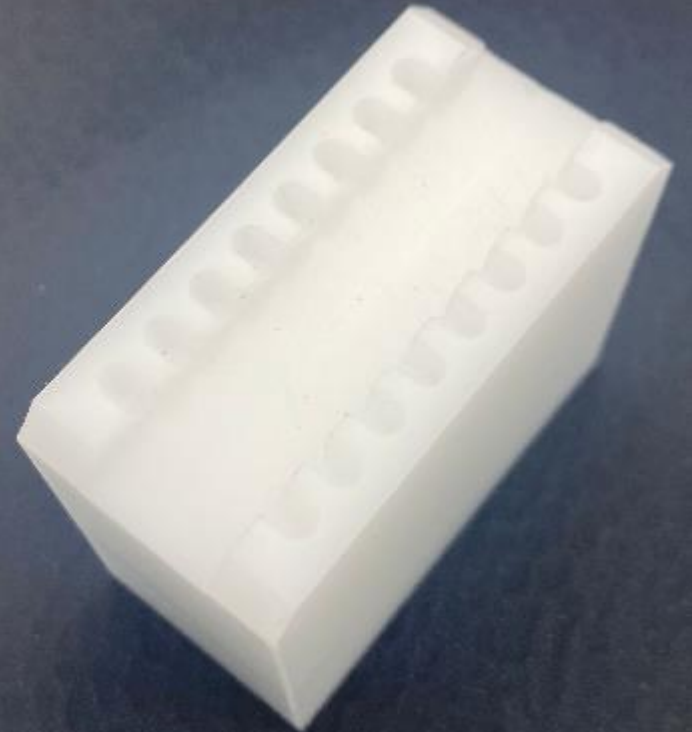
HY Precision Manufacturing

QUALITY PRECISION ACCURACY

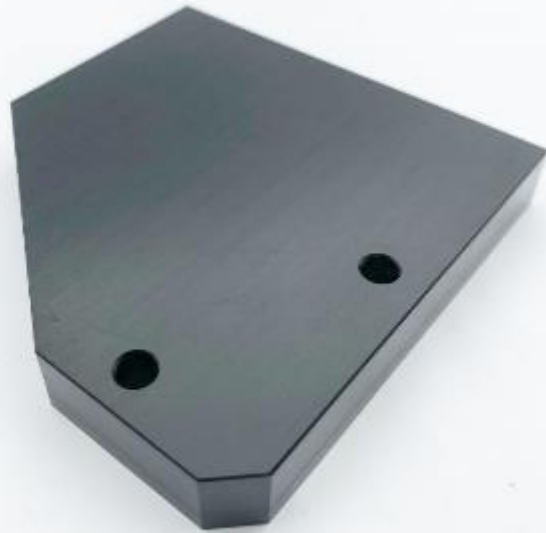


HY Precision Manufacturing

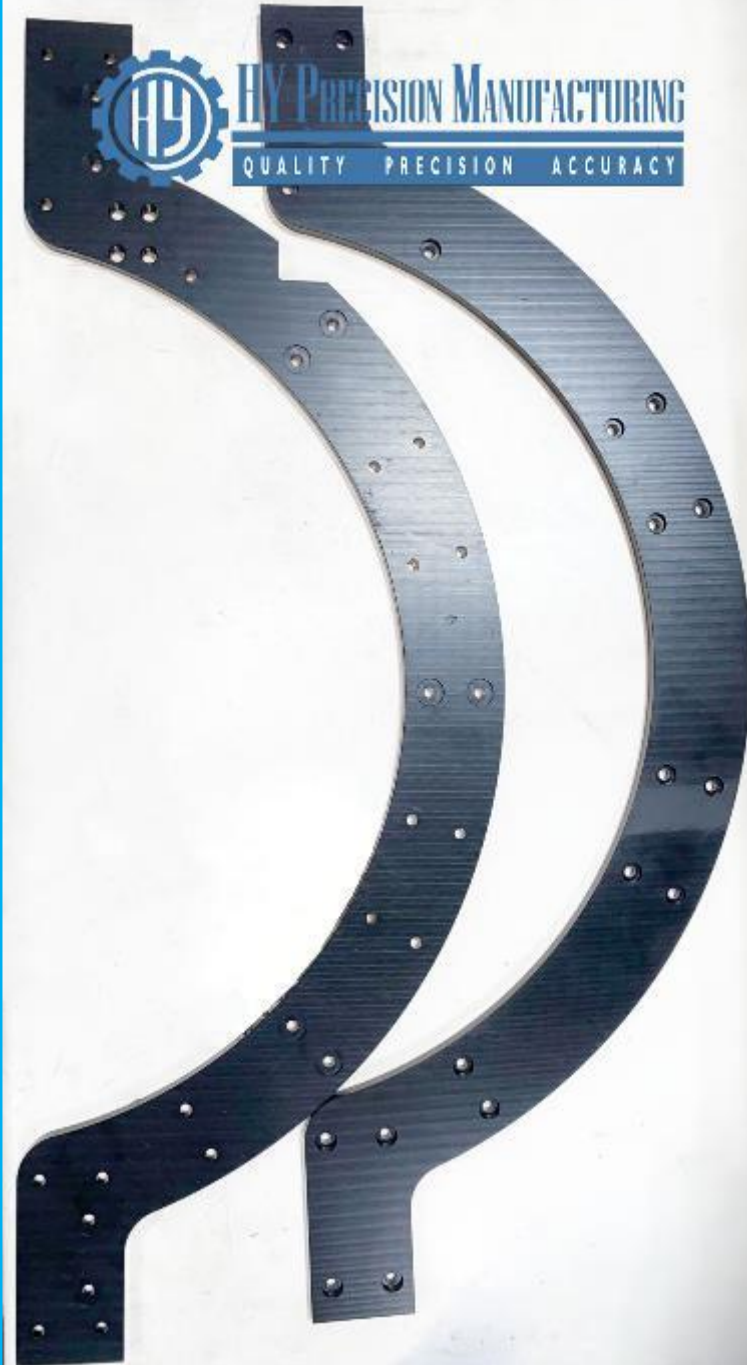
QUALITY PRECISION ACCURACY



ACETAL BLACK



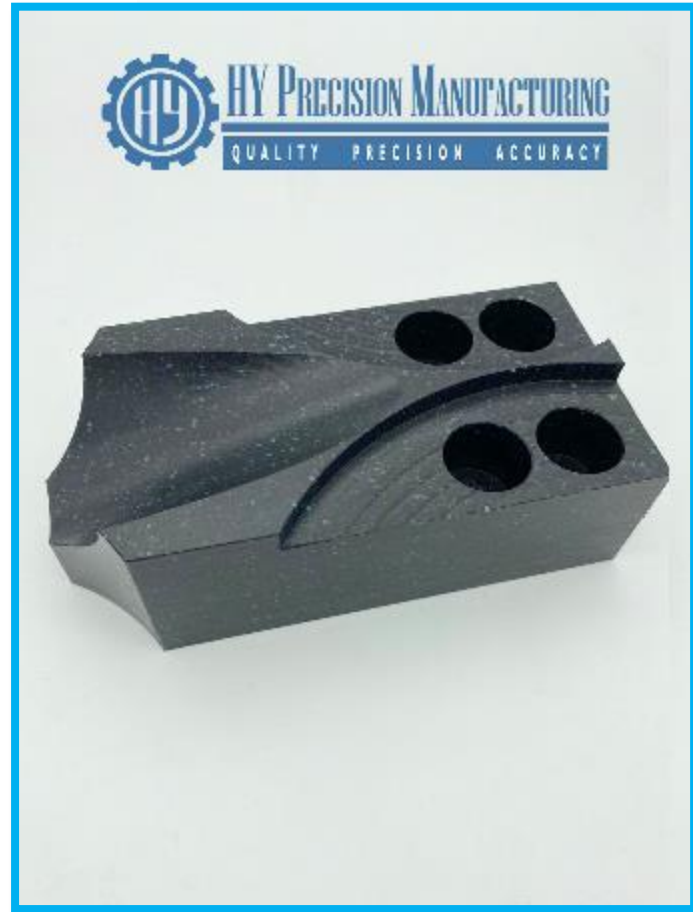
ACETAL BLACK



PEEK



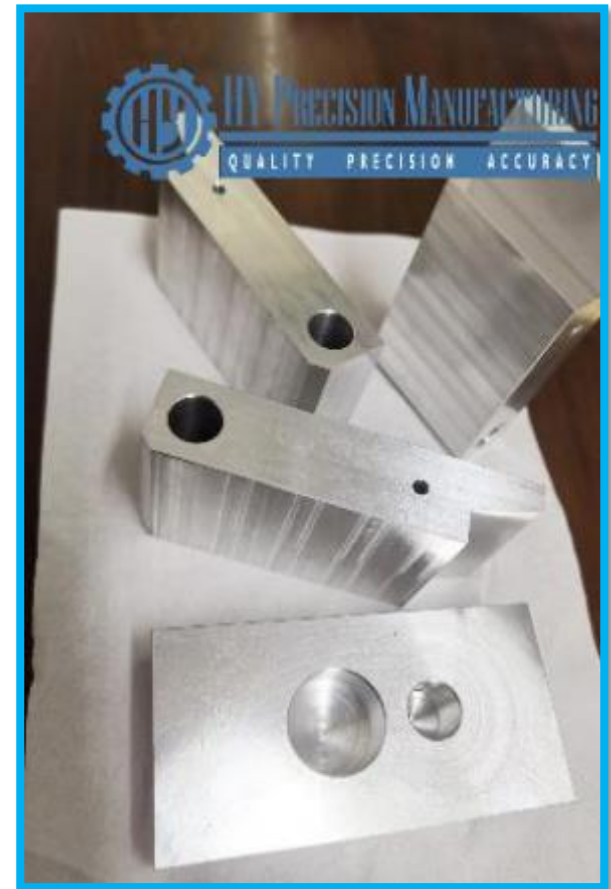
UHMW BLACK (REPRO)



ALUMINIUM 6061 T6



ALUMINIUM 6061 T6



ALUMINIUM 6061 T6



ALUMINIUM 6061 T6



ALUMINIUM 6061 T6, BLACK ANODIZED



ALUMINIUM 6061 T6, CLEAR ANODIZED



ALUMINIUM 2024



ALUMINIUM BRONZE



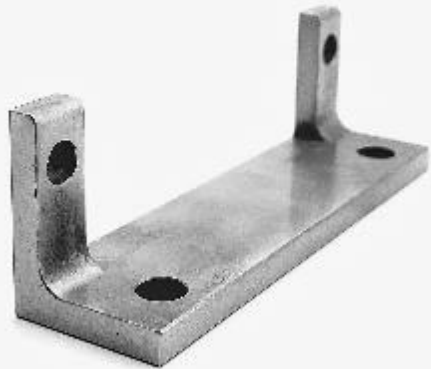
CRS 1018 (E-nickel coating)



CRS 1018



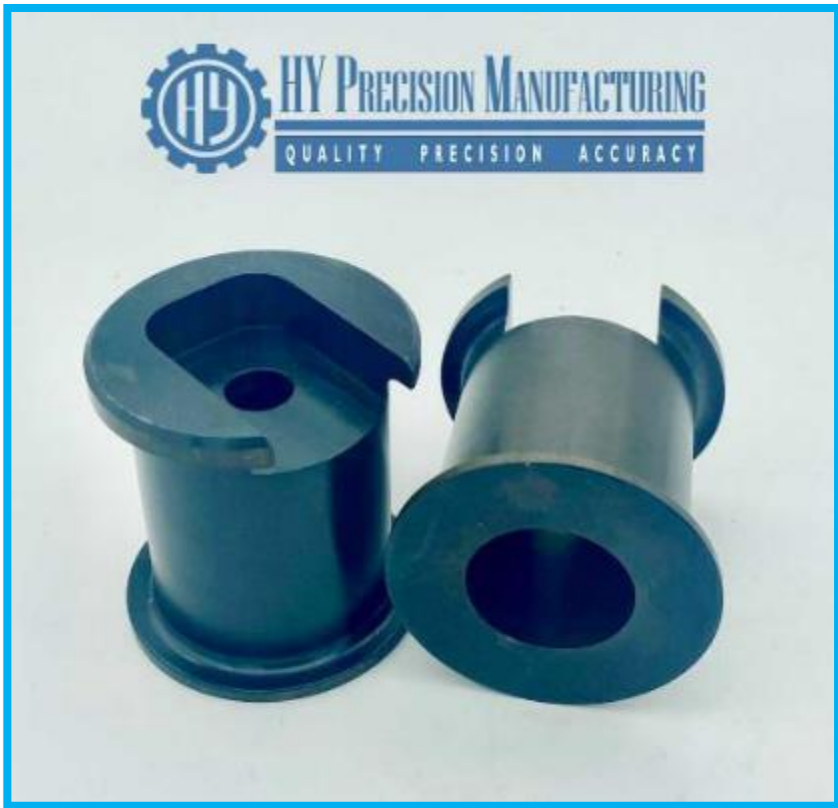
CRS 1018



CRS 1018



CRS 1018 (Black oxidized)



CRS 1018 (Clear Zinc)



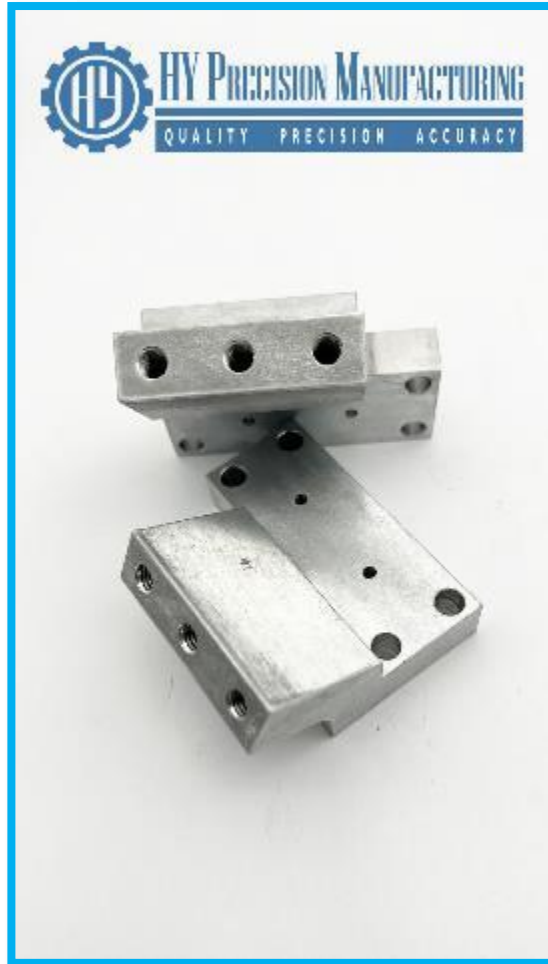
4140 HT (HRC 28-32)



4140 HT (HRC 28-32)



4140 HT (HRC 28-32)



DC53 Tool Steel HRC 45



HY Precision Manufacturing
QUALITY PRECISION ACCURACY



HY Precision Manufacturing
QUALITY PRECISION ACCURACY



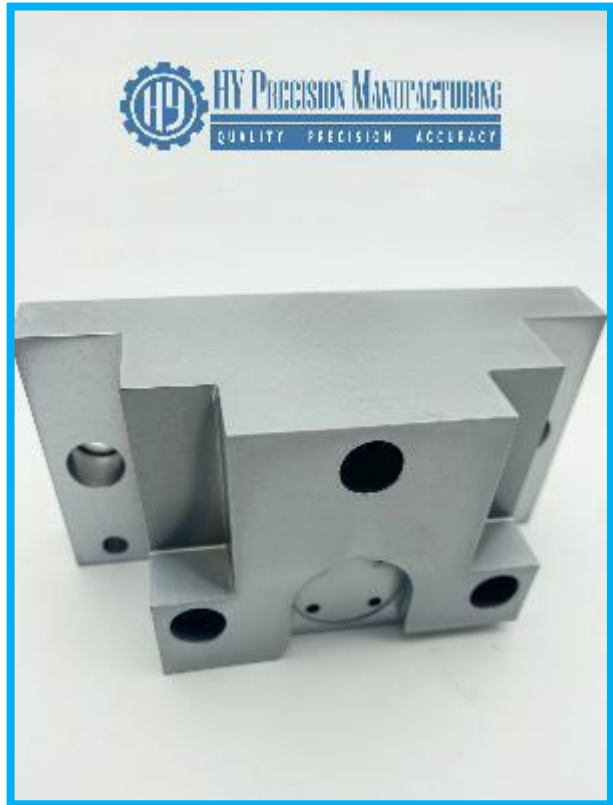
HY Precision Manufacturing
QUALITY PRECISION ACCURACY



A2 Tool Steel HRC 54-58



A2 Tool Steel HRC 54-58 (Hard Chrome)



A2 Tool Steel HRC 54-58



D2 Tool Steel HRC 54-58



O1 steel – HRC 48-52



304 Stainless Steel



304 Stainless Steel



304 Stainless Steel



HY Precision Manufacturing
QUALITY PRECISION ACCURACY



HY Precision Manufacturing
QUALITY PRECISION ACCURACY



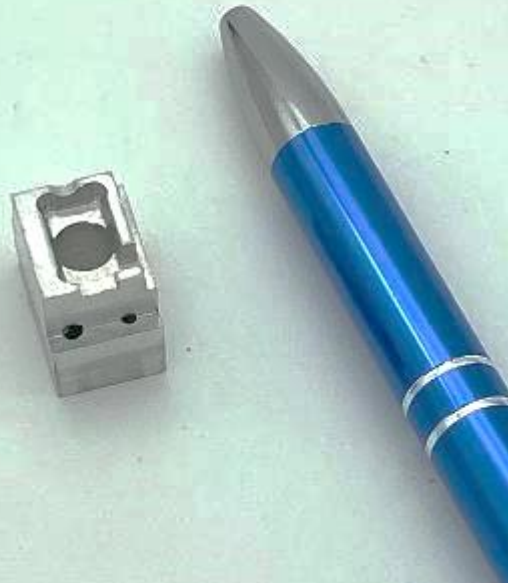
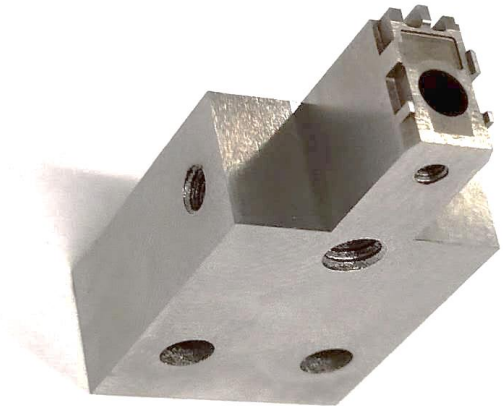
HY Precision Manufacturing
QUALITY PRECISION ACCURACY



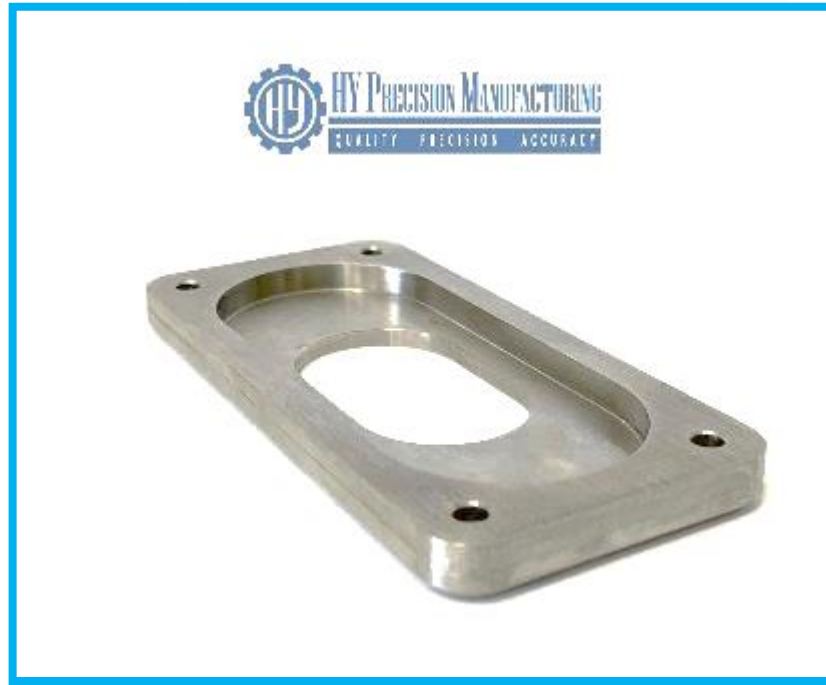
304 Stainless Steel



316 Stainless Steel



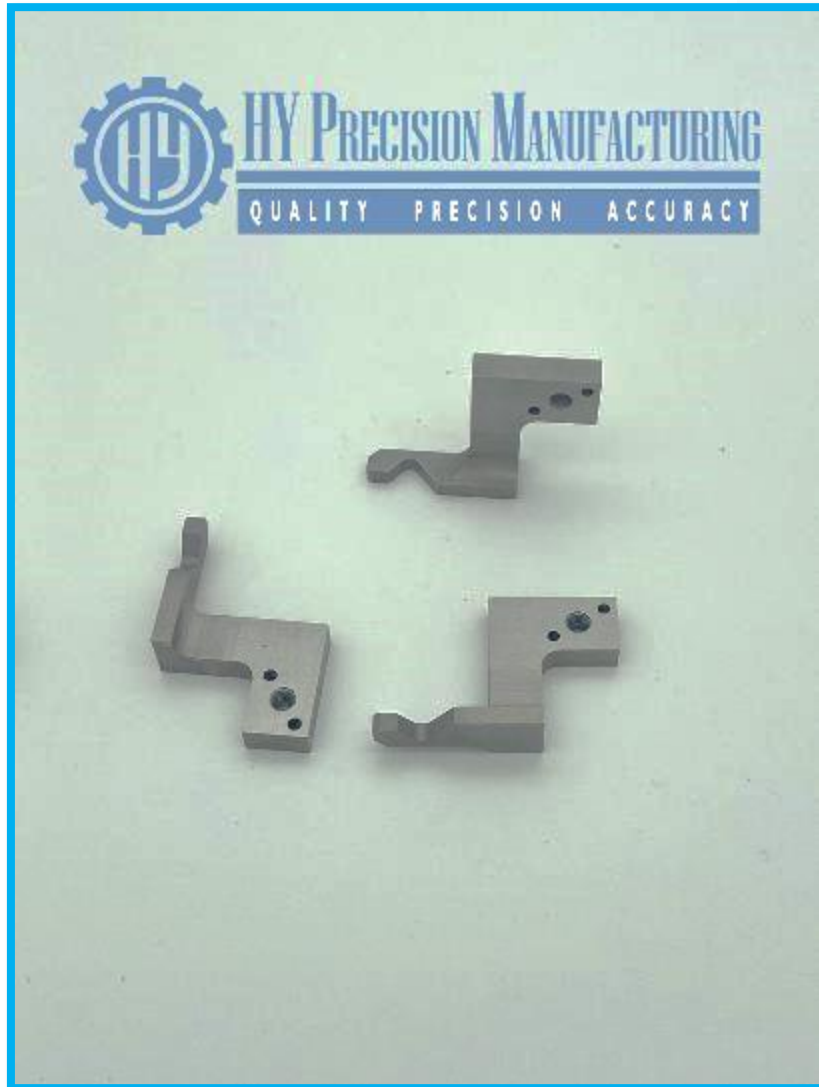
316 Stainless Steel



316 Stainless Steel



440C Stainless Steel



416 Stainless Steel



BRONZE



QC Jigs – Go Gauge (Aluminium 6061 T6 and A2 Steel HRC 48-52)



Weldments



QC Jigs – Go & No Go Gauges

Aluminium 6061 T6 and A2 Steel HRC 48-52



Thank you

For more product references, please visit our website
www.hpml.ca

QUESTIONS?